

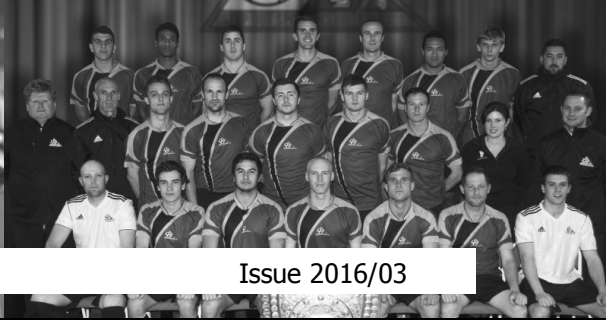
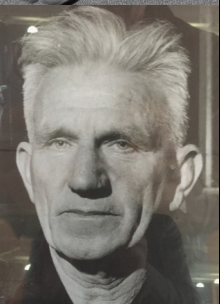


STOP OUT SPORTS CLUB

**ALTER ALTERIUS
ONERA PORTATE**



2016 OFFICIAL PROGRAMME
WOMEN'S CENTRAL LEAGUE
Stop Out v Wellington United
12.30 Saturday 30th April
MEN'S CENTRAL LEAGUE
Stop Out v Wellington Phoenix
2.30 Saturday 30th April



www.stopout.org.nz

Issue 2016/03

Patrons:

Mayor Ray Wallace
Wynton Rufer

President:

Chris Canton

Chairman:

Neil Kemp

Treasurer:

Donna Beech

Club Captains:

Andrew Beech
Kathryn Burt

Senior Liaison:

Pat Gulley

Jnr Working Group:

Tania Rook
Phil Marra
Alistair Yates
Andrew Beech

Directors of Football:

Chris Sambrooke
Mike Gibbs

Jnr Coaching Director:

Adam Reynard

Football Manager:

Paul Commerford

Club Manager:

Craig Darby



Life Members: Jim Blair, Chris Canton, Dick Dunn, Jimmy Dunn, Tom Dunn, Peter Freidlander, Brent Hamlin, Peter Hartstonge, Dave Houghton, Ernie Gould, Terry Killalea, Brendan Marsh, Arie Molenaar, Jim McCreadie, Carol McNie, Ron Weitzel.



stopout.org.nz



Stop Out Sports Club (Official)



@redgoldblood

The First Word

My blood is red... and gold!

Another great week of autumn weather sees the fields in reasonable nick. Could do with a bit of rain to be fair. Today sees the outcome of a positive initiative we promoted through Capital Football to showcase the Women's game. The result sees a double header with the Women's Central League clash between Wellington United and Stop Out as the early match followed by the Men's Central League match. Currently Wellington United Women are a formidable side and lead the Women's Central League. Good luck to both teams.

There has been much debate in the football community about the merit of the Nix playing in Central League and their desire to have professionals play in amateur leagues. All of us in football want to support the Phoenix as Wellington and New Zealand's only professional football club and help their development pathway—but not if it is detrimental to the local game and unfairly disadvantages clubs. Stop Out has promoted a solution to allow the Nix's professional players an opportunity to have regular game time against high calibre Central League opposition and still retain the history, integrity and tradition of the Central League.



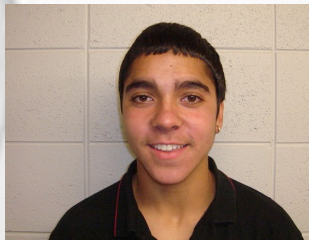
We are unsure of the next steps to reach consensus on this issue and who will actually make the final decision. We await an update from the powers that be.



To today's match. It's been a more than satisfactory start for us this season with 9 points and seeing us sitting in second place in the league; It took us until round nine of the 2015 season to get off the nine point mark so the odds are reasonably high for us to achieve that a bit sooner in 2016. And with a couple of half decent players back in the squad today we will only see the team get better as the season progresses. It's also a warm welcome home to former Stop Out players Cherbel Khouchaba, Justin Gulley (49) and ex 1st Team Manager and current stats man, Justin Raffan.

Welcome to Hutt Park and our Stop Out hospitality.

Chris Canton, President



CENTRAL LEAGUE 2016	P	W	D	L	F	A	GD	Pts
Napier City Rovers	4	3	1	0	10	4	6	10
Stop Out	4	3	0	1	10	5	5	9
Olympic	4	2	1	1	8	7	1	7
Wellington Phoenix	4	2	1	1	13	15	-2	7
Western Suburbs	4	1	2	1	9	5	4	5
Lower Hutt City	4	1	1	2	9	7	3	4
Wairarapa United	4	1	1	2	8	9	-1	4
Miramar Rangers	4	1	1	2	8	9	-1	4
Palmerston North Marist	4	1	1	2	10	12	-2	4
Petone	4	0	1	3	4	16	-12	1

2016	Central League					
Rnd 1	Sat 2 April	Stop Out	3	Wairarapa	1	Hutt Park 1 @ 2.30
Rnd 2	Sat 9 April	Petone	1	Stop Out	5	Petone Turf @ 3.00
Rnd 3	Sat 16 April	Stop Out	2	PN Marist	1	Hutt Park 1 @ 2.30
Rnd 4	Sat 23 April	Miramar	2	Stop Out	1	Dave F @ 2.30
Rnd 5	Sat 30 April	Stop Out		Phoenix		Hutt Park 1 @ 2.30
Rnd 6	Sat 7 May	Wests		Stop Out		Endeavour 1 @ 2.30
Chatham Cup	Sat 14 May					
Rnd 7	Sat 21 May	Lower Hutt		Stop Out		Fraser Turf @ 7.30
Rnd 8	Sat 28 May	Stop Out		Napier		Hutt Park 1 @ 2.30
Rnd 9	Sat 4 June	Olympic		Stop Out		Wakefield 2 @ 5.45
Chatham Cup	Mon 6 June					
Rnd 10	Sun 12 June	Wairarapa		Stop Out		Masterton Turf @ 2.30
Rnd 11	Sat 18 June	Stop Out		Petone		Hutt Park 1 @ 2.30
Rnd 12	Sat 2 July	PN Marist		Stop Out		Memorial (PN) @ 2.30
Rnd 13	Sat 9 July	Stop Out		Miramar		Hutt Park 1 @ 2.30
Rnd 14	Sat 16 July	Phoenix		Stop Out		Newtown 1 @ 2.30
Rnd 15	Sat 23 July	Stop Out		Wests		Hutt Park 1 @ 2.30
Rnd 16	Sat 30 July	Stop Out		Lower Hutt		Hutt Park 1 @ 2.30
Rnd 17	Sun 7 Aug	Napier		Stop Out		Park Island @ 2.00
Rnd 18	Sat 13 Aug	Stop Out		Olympic		Hutt Park 1 @ 2.30

2016	L Hutt	Marist	Miramar	Napier	Petone	Stop Out	'Rapa	Olympic	'Nix	Wests
L Hutt		9/7	30/4	13/8	4-0	21/5	19/6	1-2	23/7	28/5
PN Marist	3-3		11/6	16/7	28/5	2/7	30/7	7/5	3-5	13/8
Miramar	16/7	2-3		7/5	13/8	2-1	28/5	30/7	2/7	18/6
Napier	4/6	1/5	24/7		10/7	7/8	3-2	19/6	22/5	1-1
Petone	2/7	6/8	4/6	0-4		1-3	7/5	16/7	11/6	21/5
Stop Out	30/7	2-1	9/7	28/5	18/6		3-1	13/8	30/4	23/7
Wairarapa	2-1	21/5	7/8	3/7	24/7	12/6		3-3	4/6	30/4
Olympic	11/6	23/7	21/5	1-2	30/4	4/6	9/7		6/8	2-1
Phoenix	7/5	18/6	4-3	30/7	3-3	16/7	13/8	28/5		9/7
Wests	6/8	14/6	1-1	11/6	30/7	7/5	16/7	2/7	6-1	

Women's Central League: Stop Out vs Wellington United



No.	Stop Out Sports Club
GK	Stephanie Simmons
2	Alana McGee
3	Emily Jones
4	Aimee Sanson
5	Emerald McGlashan
6	Kirsty Bidgood
7	Rhiannon Jones
8	Melanie MacDougall
9	Anja Madsen
10	Kassandra Clendon
11	Radha McGlashan
12	Olivia Wallis
13	Melissa Prattley
14	Sasha Gray
15	Rhiannon Jones
16	Bex Williams



No.	Wellington United
GK	Natasha Ingram
2	Chelsea Empsom
3	Hope Gilchrist
4	Sam Kendrick
5	Ella Wilson
6	Francesca Grange
7	Maggie Jenkins
8	Hannah Wignall
9	Sandy Cumpstone
10	Michaela Robertson
11	Jayme-Lee Hunter
12	Jemma Robertson
13	Alice Cooke Harvey
14	Sarah Alder
15	Elizabeth Crowe
16	Asha Strom

After having a break last weekend due to Kelly Cup games we welcome Wellington United to Hutt Park as both teams look to continue their impact in the top half of the table. Wellington United head into today's game as clear favourites after thumping Massey 16-2 in their previous match and will be looking for more of the same as they aim to keep their unbeaten run going.

Our Stop Out ladies having come off a battle against Palmy Marist, will look for some gold old grit and determination and look to steal some valuable points. Today we see three players who had an impact in the Kelly Cup game included in the match day squad and an opportunity to make their Central League debut's. Good luck to Olivia Wallis, Alana McGee and Kirsty Bidgood.

We thank all the supporters for coming out to watch today and wish our Men's Central League team all the best in what we know will be a great club day.



2nds carry on their winning way!

Game 3 vs Wellington United

Out on Newtown Park the reserve team went out to carry on their good form from the previous two games. After a first time volley courtesy of Kieran Mouton off a well worked corner routine the team were on a high.

Following on from that finish, Josh McEvoy picked up the ball off a bad touch from the Wellington United centre back and coolly slotted past the keeper to put the team 2-0 up. A late lapse in concentration lead to a United goal late in the first half.



2-1 up, the second half would be an exciting time and so it proved as we conceded two quick second half goals, to find ourselves 3-2 down. To make it harder we then had a player given his marching orders after two yellow cards.

With 10 men the boys carried on with a lot of determination and heart.

Then bring on Troy Peek, yes Troy Peek, with a great diving header to equalise and put us back in the game! After a few tactical changes, step up new boy Rhys Glover, who curled a spectacular goal home from at least 25 yards out to put us back in the lead!

With heads held high Jasper Povey put the icing on the cake with a great run and finish to make it 5-3.

A superb win for the lads! A great team effort and show of the character that we need to be successful.

Roll on next week!



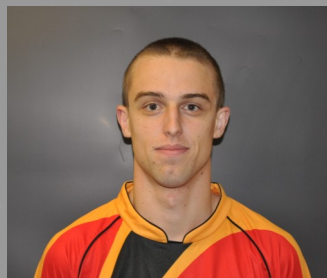
Capital 2 2016	P	W	D	L	F	A	GD	Pts
Stop Out	4	4	0	0	14	7	7	12
Seatoun	4	3	0	1	7	3	4	9
Wakanae	4	2	1	1	8	3	5	7
Wainuiomata	4	2	1	1	10	11	-1	7
University	4	2	0	2	9	7	2	6
Island Bay	4	1	2	1	7	5	2	5
Wellington Utd	4	1	1	2	8	14	-6	4
Lower Hutt	4	1	0	3	9	12	-3	3
Waterside	4	1	0	3	6	10	-4	3
Lower Hutt City	4	0	1	3	4	10	-6	1

Game 4 vs Douglas Villa

The reserve team took to Hutt Park #2 looking for their 4th win in a row to carry on a great start to the 2016 season. The team welcomed young Caleb Williams back to the starting line-up along with club stalwart and captain Troy Peek also making his first start since of the year. We also welcomed Alistair Yates, Alastair Hicks and Griff Edward to the squad. In all there were seven U19 players and three U17 players in today's squad.

The game started with both teams finding their feet, Douglas Villa definitely the more physical side and they made that known early on. Mid way through the first half after some slick build up play down the left hand side, Tom Paul received the ball from Josh McEvoy played a neat one two with James Houpt before burying his first of the season. Late in the first half Villa hit back with a well drilled goal which came after a long throw into the box.

1-1 at half time and the lads went out in the second half to convince everyone watching that they deserved to win the game ahead. A change saw "goal a game" Yates take the field 15 minutes into the second half and he quickly made his presence felt. Yates made a surging run toward the by-line before crossing expertly to Rhys Glover who buried it to make it two in two for the new recruit. Yates wasn't done there though and after some patient build up he buried one of his own from his favourite place, the 18 yard box. To make things even better Yates then turned his man, after receiving a pass from Troy Peek, and buried his second of the day.



The lads performed valiantly and stuck to their guns, played to our strengths and made another massive statement of intent to everyone. Well done boys. A great second half performance and an excellent result!





Stop Out Sports Club

***Coach:**
Chris Sambrooke*

***Assistant Coach:**
Stu Pyne*

***Manager:**
Paul Commerford*

***Physio:**
Jonathon Crowley
Proactive*

No.	Player
GK	Chris Campbell
2	James Sutcliffe
3	James Sharp
4	Khalid Razouk
5	Lewis Francis
6	
7	Martin Packer
8	Michael McCutcheon
9	Paora Porter
10	Miroslav Malivuk
11	Andrew Abba
12	Brandon Tai
14	Luke Grindlay
15	Luis Corrales
16	Jason Tipping (c)
17	Steven Gully
18	Sam Pickering
19	Jordan Martens



Wellington Phoenix



No.	Player
GK	Henry Maurice
RGK	
2	Justin Gulley
3	Luke Tongue
4	Liam Hare
6	Sam Philip
7	Omrie Saolele
8	Joe Bell
9	Cherbel Khouchaba
10	Sarpreet Singh
12	Sam Wilson
14	Nick Lane
15	Liam Wood
16	Jake Williams
17	Ollie Whyte
19	Liberato Cacacae
20	Jack-Henry Sinclair
21	Ruairi Cahill-Fleury
22	Sam Gillespie
23	Willem Ebinger
24	Liam Moore

Coach: Andy Hedge
Asst: Valerio Raccuglia
GK Coach: Phil Imray
Strength & Conditioning: Weijie Lim
Physio: Brent O'Connor
Manager: Justin Raffan



Referee:
 Martin Roil



Assistants:
 Pat Zhang
 Jeffery Owen



Men's Central League, Stop Out v PN Marist



Chris Sambrooke

Coming off the back of two wins to start the season against Wairapa and Petone we entertained Palmerston North Marist at Hutt Park. We knew that we were going to be in for a

tough physical battle like every game against Marist but this year that have added real quality in their squad with players like Borren, Soromon and Cooksley who have all arrived from Wairapa.

We started the game well but fell behind to a goal against the run of play to Soromon. That scrambled effort proved to be the only real chance that he created as he was well controlled by James Suttcliffe at right back. The pleasing thing when falling behind especially against a side that likes to defend deep was that we kept to the plan and kept our patience when moving the ball forward.

We drew level after 25 minutes through a Micky Malivuk penalty. And shortly after took the lead through an Andrew Abba break and squared pass to Micky who finished past the keeper. With no other scoring action in the first half we went into the break leading.

The second half turned into a bit more of a battle. We defended deeper than we had in the first half and lost a bit of the fluidity playing through the midfield and into our attacking third. That being said we were solid defensively and saw out the game to pick up our third win of the season out of three.

Result – Stop Out 2 v Palmerston North Marist 1

Goal Scorer – Micky Malivuk 2

MOM – James Suttcliffe



Photos courtesy of
Mike Moran

Men's Central League, PMiramar v Stop Out

It is always a pleasure travelling to David Farrington Park in the Central League. As always the pitch was immaculate and we were focussed on picking up another win to keep our good start to the season going.

In terms of our defensive shape the first half was the best performance of the season. We attacked well either through build up play or on the counter attack, but on the defensive side of the ball we nullified any threat that Miramar had and looked strong. We took the lead just before halftime when the returning Enrico Meirelles had his strike cannon of the cross bar and Micky was on hand to nod in the finish and his sixth of the season. Half time we went in 1-0 up.

The second half Miramar were the better side, we ended up defending too deep and we struggled to get the ball clear. They equalised in the 70th minute hit and the woodwork twice shortly after. The scored the winner in the 85th minute through a ball in behind with a strong hint of offside, from a cross. We finished very strongly and peppered their goal but couldn't find an equaliser.

It was our first loss of the season and whilst obviously disappointed with the loss we find ourselves on nine points and one off top spot through the first 4 games of the season. That's a very good start and we need to rebound against the Wellington Phoenix at Hutt Park today.

With Team Wellington's run at the Oceania Champions League coming to an end we welcome back Steve Gulley and Luis Corrales into the group. That will really add some impetus to the quality we have in this squad.

Result – Stop Out 1 v Miramar Rangers 2

Goal Scorer – Micky Malivuk

MOM – Andrew Abba

Photos courtesy of
Michael Welsh



Marty's men bounce back!



After winning Capital 6 in 2015, Stop Out thirds have started well in Capital 5 with three wins and just the one loss so far.

ANZAC Monday saw a perfect evening for football at Wakefield against BNU Pilsner. Our first encounter with BNU since they were promoted two seasons ago started evenly with both teams looking to attack.

The first 10 minutes were evenly matched, with the Stop Out defence looking solid as a rock. At the other end of the pitch, the midfield and forward line were combining superbly.

On 14 minutes, a Stop Out corner was cleared by the BNU defence only for Michael Johnson to smash a fearsome half-volley goal bound. The BNU keeper made an initial save but couldn't hold onto the shot, and Kieran Page was the first to react to open the scoring.



A second was added when new signing Matt 'Chopper' Henderson slotted a free kick from the edge of the box into the bottom right hand corner.

Stop Out upped the intensity across the pitch and dominated the rest of the half, but we couldn't find the net again.



NEW ZEALAND
RACING BOARD





After the break, Stop Out came out all guns blazing, led by half time substitute Jake Phillips. Jake caused havoc amongst the BNU defence, turning them inside out.

Just 10 minutes into the half, Jake pounced on a moment of indecision by the defender, getting in behind him and lobbing the keeper. At this point, Stop Out were in complete control of the game, but didn't ease up at all. Instead, Jake continued to harass the defence and was rewarded with a second goal on 65 minutes. 0-4 up and cruising, there was a late twist as Chopper was taken down in the box for a penalty.



The BNU keeper made a great save to his right, but true to the rest of the game, Stop Out were first to react and it was a straight race to the ball between Tea Lomax and Kieran Page. Tea (who was arguably the best player on the pitch) won this race and expertly slotted home the fifth goal just before the final whistle.

Photos courtesy of
Mike Sullivan

Final score BNU Pilsner 0-5 Stop Out, leaving us second on the table, just one point behind early leaders Island Bay.

Today we welcome Naenae seconds to Hutt Park 2 at 2.30pm.

In a game where three ex-Naenae players (Jake Phillips, Tea Lomax and Matt Henderson) line up against their old club, it's sure to be a great entertaining match.

Enjoy the football.

Marty Dutton Player/Coach

Capital 5 2016	P	W	D	L	F	A	GD	Pts
Island Bay	4	3	1	0	10	3	7	10
Stop Out	4	3	0	1	11	2	9	9
North Wgtn M	4	3	0	1	9	5	4	9
Tawa	4	2	2	0	9	3	6	8
Waterside	4	2	0	2	10	6	4	6
Olympic	4	2	0	2	8	10	-2	6
BNU	4	2	0	2	5	9	-4	6
Tawa AC	4	1	1	2	4	6	-2	4
Nth Wgtn W	4	0	0	4	3	13	-10	0
Naenae	4	0	0	4	4	16	-12	0

Kelly Cup - Premiers down table topping KCU

Kelly Cup 1st Round: Stop Out 2 Kapiti Coast United 1 (1-1) Scorers: Jones, R and Wallis, O

For the second time this season we welcomed Sean and the KCU ladies to Hutt Park. Our first round league match went the way of the blues 1-2 after 90 minutes of fairly even play and opportunities shaded by KCU on the scoreboard. Three weeks into the season and they remain unbeaten (to top the table) and we can't buy a result (to sit bottom of the table). The girls are coming along well though as a team, the previous week after 90 minutes toil, they went down to Vic' Uni 0-1. A late goal not the reward we deserved but then again that's how it rolls some weeks if you don't take your chances. It's a sign of the times (tip the hat to Prince) that these days our reserves contest so well with the team from Vic', it's not that long ago our women's first team were battling to get a share of the spoils from games against the students.

The Cup match started with the girls having the upper hand, the KCU defence under some pressure from a regular diet of attacks down our right flank. In the middle of the park Rhiannon was influential and it was somewhat fitting she grabbed the match's opening goal – a top drawer finish with her left peg from the edge of the box. While we continued to attack with intent the KCU team were improving, launching attacks at us that we were coping with – just – until near on half time when KCU drew level. Into the shed at the break on even terms and we talked about quickening up our movement of the ball and undertook a few changes to make sure we had fresh legs for the second half battle. On a hot afternoon, it was 25 degree plus out of the shade, the fresh legs helped the cause. While KCU enjoyed a good share of possession the defence scrambled well, cheered on every step of the way by a good crowd on the sidelines. Into the last quarter and a shuffle of personnel and roles worked a treat almost immediately. Our reward for the changes came in the 75th minute when Olivia Wallis got behind the blues defence and calmly slotted a chance to restore our lead. The girls dug into their energy reserves and were stoic for the last 15, some spilt claret for the cause (Jess') while everyone ran themselves to a standstill and over on the sideline I lost a few more follicles. A few checks of the watch as time stood still but then it was finally over and the girls could celebrate not only a spot in the next round but also their first win of the season, a deserved reward for a solid 90 minutes.

On the day it was good to mark Jaimee's 50th club match with a win. On the pitch the "veteran" was joined by a few youngsters just starting out on their senior careers with us. It's early days but some of these youngsters are playing with some admirable aplomb, more than comfortable with the intensity of the game and certainly they have the skill set to compete, so watch for them to come through and challenge for places in our CL team in the months ahead. Thanks again to the great number of supporters. We keenly await the draw for the Cup semi-finals where either CL opposition (Seatoun and Upper Hutt) or last year's PL champions (Petone) will be our opponent. The team; J Howes, K Farmer, S Swanson-Tuirirangi, A McGee, J Kincaid, J Bialy, R Jones, S Burley, S Eder, O Wallis, M Macdougall, E Yates, K Bidgood, P Dobbin.

The Last Word!

What's on telly tonight?

“Don't let your kids grow up thinking football is a TV programme” are the words I saw, the other day, on a photograph of a poster being pushed at lower level football grounds in England. It struck me as on the way to being sadly true. First up, I started off thinking that this really isn't an issue that directly impacts football in our region. It has been a long time since local football was on 'free to air' television and could possible have kept us at home instead of at a match. (Anyone else remember watching a Stop Out/ Napier match televised from the Basin Reserve?)

Secondly, then there is the fact that television is quick and convenient and warm and in your home and brings major football right in to your living room. At a time when there is no clash with any local football but does that impact us?

Of late I have noticed very few youngsters at pitch side when I am watching Men's Central League matches. Going back some time there would always be a few. I can remember, further back, coaches telling us that the first team were playing, that afternoon, and would we be going down to watch. I know that I am thinking back years but I see a clear change in the spectator participation of the youngsters around local football. Yes, it is true, that one factor is that some are playing at the same time. However, even when there is no clash we are still not seeing numbers. Is that apathy or the product being viewed unfavourably?

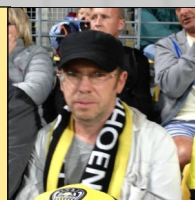
A friend offered the view that television does play a role. In that, games streamed into our homes provide a spectacle that we just cannot emulate. So younger fans are put off coming down as they think they will not enjoy what they see as it will be drab by comparison with a televised game.

For what it is worth I have no clue as to what is going on here. Perhaps this is more a case of me simply 'thinking out loud'. It would be great to see more younger faces pitch side but there are a lot of time pressures out there and maybe it is simply easier to get the football fix from the television.

Leaving the comment about 'kids' behind it is true that television truly has spread the faith, so to speak, but I often wonder at what cost. A Nigerian friend talked about being at a match, in Lagos, that was being played at the same time as some Premier League match in England. England and Nigeria share the same time zone. This caused a clash as both matches kicked off at the same time. The end result was bars all over Lagos were full of Premier League fans whilst the local match had a crowd of about a thousand. Down from what might have been fifteen times that.

Television is a very powerful force.

Life-long Stop Out fan Mike Barton gives us his perspective on the beautiful game!



PHOTOMAC
f photomacnz
SPORTS | WEDDINGS | EVENTS
02102313879





brendan foot
supersite

