



**2013 Official Programme
3rd August 2013**

Stop Out vs Petone AFC



Patrons:

Mayor Ray Wallace
Wynton Rufer

President:

Chris Canton

Vice President:

Peter Hartstonge

Chairman:

Neil Kemp

Treasurer:

Donna Beech

Club Captains:

Brent Hamlin
Kathryn Burt

Women's DoF:

Brendan Marsh

Senior Liaison:

Pat Gulley

Mens DoF:

Steven Gulley

Football Managers:

Justin Raffan
Russell Burley

Jnr Coaching Director:

Scott Easthope

Jnr Coordinator:

Andrew Beech

Committee:

Bernie Kane



Life Members:

Dick Dunn, Jimmy Dunn, Tom Dunn, Peter Freidlander, Peter Hartstonge, Dave Houghton, Ernie Gould, Terry Killalea, Arie Molenaar, Jim McCreadie, Carol McNie, Ron Weitzel.

www.stopout.org.nz

The First Word

My blood is red... and gold!

Well the season keeps rolling on and amazingly it is just four matches from completion. Our last home match was a feisty affair against an over physical side Marist side where we comfortably dispatched them 5-2. And then an emphatic 8-1 demolition of a poor Wellington United side.

What was fascinating was the sight after about 75 mins of their lonely coach with his two subs already used. No Manager, no Physio, no Goalkeeping coach! Perhaps it highlights where the focus of a 2nd team is at some clubs!

A Joe Gaughan 60 minute cameo saw him score another hat trick—that's five hat-tricks in 2013, and he leads the Premier League Golden Boot with 24 goals. Joe has also claimed the record for the most goals in a season since Mike Johnston's remarkable 63 goals in the 1968 season. A couple of bullets from Packer, a brace from Stevey and a fine finish from Eddie rounded out the thumping. What's even more incredible—the team was missing Malivuk, Theron, Toms, Sansom and Aden! The power of a large and high quality squad is paying dividends.

With Stevey notching his 100th game for the club recently, today it's the turn of Captain Jason Tipping to reach an important milestone. "JT" will play his 50th match for the clubs since his debut in late 2010. The rock at the heart of our defence is playing as well as ever and his leadership qualities are a calming influence on the team. Congratulations "Tips" and here's to 50 more.

Enjoy the game and enjoy our Stop Out hospitality!



**24 and climbing -
Joe Gaughan**



Steven Gulley leads the team out for his 100th Stop Out 1st team appearance against Marsit



Capital Premier	P	W	D	L	F	A	GD	Pts
1 Stop Out	14	11	2	1	55	14	41	35
2 Island Bay	14	9	4	1	48	18	30	31
3 Waterside	14	9	3	2	35	13	22	30
4 Olympic	14	6	3	5	28	35	-7	21
5 University	14	6	1	7	20	27	-7	19
6 Miramar	14	5	3	6	28	25	3	18
7 Petone	14	5	2	7	22	36	-14	17
8 Marist	14	5	1	8	14	25	-11	16
9 Wainuiomata	14	2	1	11	10	34	-24	7
10 Wgtn Utd	14	1	2	11	14	47	-33	5



Cap Prem	IBU	Marist	M'mar	Petone	Stop Out	Uni	Wainui	W'side	Olympic	Wgtn
Island Bay		2-0	17/8	2-2	3-3	6-2	4-1	2-1	3/8	3-0
Marist	13/7		2-1	2-0	0-3	3-1	1-0	0-4	0-1	17/8
Miramar	0-0	10/8		4-2	0-4	3/8	0-1	2-3	0-2	10-0
Petone	1-7	2-0	2-3		2-2	0-3	10/8	0-5	13/7	2-1
Stop Out	1-0	5-2	7-0	3/8		17/8	2-0	4-2	8-0	5-1
University	10/8	1-0	0-4	2-0	1-3		2-1	0-2	2-2	4-1
Wainui	0-6	1-1	13/7	2-3	2-0	0-1		0-2	17/8	3/8
Waterside	2-2	3/8	1-1	17/8	13/7	2-0	4-0		4-1	2-0
Olympic	3-6	4-2	0-2	2-4	10/8	3-1	5-2	1-1		1-1
Wgtn Utd	2-5	0-1	1-1	1-2	1-8	13/7	3-0	10/8	2-3	

2013 CAPITAL PREMIER LEAGUE

Rnd 1	Sat 6 April	Stop Out 1	Island Bay 0	Hutt Park @ 2.30
Rnd 2	Sat 13 April	Miramar 0	Stop Out 4	Dave Farrington @ 2.30
Rnd 3	Sat 20 April	Wainui 2	Stop Out 0	Richard Prouse @ 2.30
Rnd 4	Sat 27 April	Stop Out 4	Waterside 2	Hutt Park @ 2.30
Rnd 5	Sat 4 May	Marist 0	Stop Out 3	Kilbirnie Park @ 2.30
C/Cup	Sat 11 May	Wgtn Coll 0	Stop Out 4	Wgtn College @ 2pm
Rnd 6	Sat 18 May	Stop Out 5	Wellington 1	Hutt Park @ 2.30
Rnd 7	Sat 25 May	Petone 2	Stop Out 2	Memorial @ 1.30
Rnd 8	Sat 1 June	Stop Out 8	Olympic 0	Hutt Park @ 2.30
C/Cup	Mon 3rd June	Waterside 6	Stop Out 0	Karori Park @ 2.00
Rnd 9	Sat 8 June	University 1	Stop Out 3	Kelburn Park @ 2.30
Rnd 10	Sun 22 June	Island Bay 3	Stop Out 3	Wakefield @ 4.00
Rnd 11	Sat 29 June	Stop Out 7	Miramar 0	Hutt Park @ 2.30
Rnd 12	Sat 6 July	Stop Out 2	Wainui 0	Hutt Park @ 2.30
Rnd 13	Sat 24 August	Waterside	Stop Out	Karori Park @ 2.30
Rnd 14	Sat 20 July	Stop Out 5	Marist 2	Hutt Park @ 2.30
Rnd 15	Sat 27 July	Wellington 1	Stop Out 8	Newtown Park @ 2.30
Rnd 16	Sat 3 Aug	Stop Out	Petone	Hutt Park @ 2.30
Rnd 17	Sat 10 Aug	Olympic	Stop Out	Wakefield @ 5.45
Rnd 18	Sat 17 Aug	Stop Out	University	Hutt Park @ 2.30



PHOTOMAC
 photomacnz
 SPORTS | WEDDINGS | EVENTS
 02102313879

Women's Football

Women's Premier Cup Semi Final
1.00pm August 4th Newtown Park
Stop Out vs Wellington United

Highlight of the past two weeks would have to come from the **Div 3 Blacks**, with master coach Angus at the helm. With a 5-0 win up the coast at KCU, where Louise MacKay hit 4, the team confirmed their promotion to next year's D2 – with still three games to play.

The clean sheet took the time since they last conceded a goal out beyond 12 hours! An amazing feat as this is a team that doesn't always have a designated keeper, in fact some 7 girls have donned the orange jersey and gloves through the winter.

Last weekend confirmation of winning the league had to be put on ice as they fell to spirited BNU team 1-2 in a thriller, BNU's first goal coming 776 minutes since our team last conceded back in May. Tomorrow they head to the turf at Wellington College to play Wellington United – and their sole focus is sealing the league title & cracking open the champagne (and diet coke).



Some of the Women's 3 team.
(another Burley at the club!)

After completing their regular season with win #13 on the trot (versus Marist 2-0) the **Premiers** slipped into Cup football mode last week. Enjoying the change of focus and without the pressure of the league campaign the team rollicked home with a 5-0 win over a hapless Marist (who don't want to see us again this winter!). Melissa "O for awesome" Adams bagging a hatrick, while Melanie Macdougall bagged a brace and in doing so scored her 50th goal in senior football.

Mel Mac' has been the engine of our first team over the past four winters, winning the MVP award in 2010 & 2012, and her 50 goals from midfield from just 65 appearances.



The Women's 3 team have
achieved promotion

Women's 3	P	W	D	L	F	A	GD	PTS
1 Stop Out	6	5	0	1	23	2	21	15
2 Naenae	7	4	2	1	17	12	5	14
3 BNU	6	3	2	1	9	7	2	11
4 Nth Wgtn	7	3	2	2	11	10	1	11
5 Petone	6	3	1	2	9	5	4	10
6 Wgtn Utd	6	3	0	3	8	5	3	9
7 IBU	6	1	2	3	4	10	-6	5
8 KCU	6	1	0	5	3	20	-17	3
9 Tawa	6	0	1	5	4	17	-13	1

Speaking of goals, the race for this winter's Golden Boot remains tight – with Mel Mac' tied on 17 with new face Melissa Hodgson. Melissa has played most of her football this winter for the D3 Blacks and with a cracking turn of pace has caused havoc for opponent's. Her goals are an integral part of the team's success this season. Very much in the race are Heather Williamson on 16, Laura Dobie on 15 and Mel "O" on 13.

The **Div 2** team scored a much needed win last weekend over Marist Nova's. Chris and I can still recall when our first Women's team would play the Nova's – and find the well drilled "older" ladies a very good opponent & a good host – now our 3rd team plays them, and last Sunday secured a 2-0 win. Mid table beckons for the team if they can tuck away a win (or two) over the next few weeks – a fair outcome in a grade that has shown you can have no "off" weeks & "wise" heads do win games.

The **Div 1** team are set for a mid-table finish, a little short of expectations perhaps but a couple of games where the rub of the green didn't go our way has proven decisive. Still no excuses, and the team when at its strongest has played some cracking football in a very tight grade which augurs well for next winter.

The **Div 1** team (2nd team) like the Premiers are very young, with fresh out of junior football Christine Hosie, Liv Ryan and Sian Feeney starring each week in their first year of senior football. They're mixed in with "mature" young faces such as Jade Morrissey, Gemma Broughton, Amalia Lipidis, Courtnee Cropp, Jess Fussell and Georgia Izzett, who are all still at school.

No clearer picture on any play-off for CL as yet, but at least Premier Cup and then Kelly Cup football will keep the Premiers squad busy till the end of August.

Women's u19 Movie Night, August 21st – "Now You See Me".

Tickets \$20 All funds support our travel to Nationals in Christchurch.

Contact Brendan 0210647834 pleas

This weekend;

Premier Cup semi-final;

Wellington Utd host Stop Out, 3pm @ Wakefield #1



Regular league matches are;

**Div 1 ,Newtown Park at 1pm
playing Wellington United,**

**Div 2, Hutt Park at 1pm
hosting Porirua City**

**Div 3, Wgtn College at 5pm
playing Wellington United .**

	Women's Premier	P	W	D	L	F	A	GD	PTS
1	Stop Out	14	12	0	1	55	7	48	39
2	University	14	10	1	3	56	21	35	31
3	Brooklyn	13	10	1	2	41	12	29	31
4	Wellington Utd	13	8	1	4	47	20	27	25
5	Marist	14	6	0	8	19	29	-10	18
6	Waterside	14	3	1	10	17	42	-25	10
7	Lower Hutt	14	2	1	11	6	45	-39	7
8	Nth Wgtn	14	0	1	13	6	71	-65	1



Stop Out Sports Club

Coaches:

Steve Gulley

Scott Easthope

Asst Coach:

Paul Commerford

Goalkeeper Coach:

Dave Finley

Physio:

Laura Ayre

Manager:

Justin Raffan

Grounds:

Peter Hartstonge

No.	Player
(GK)	Jack Kemp
(GK)	Michael Howells
2	Anusak Koontep
3	Steve Toms
4	Damon Fussell
5	Regan Steele
6	Robert Sansom
7	Martin Packer
8	Joe Gaugahan
9	Fisum Aden
10	Miroslav Malivuk
11	Eddie Burnett
12	Brandon Tai (vc)
13	Finn Sorger
14	Jake Theron
15	Silao Malo
16	Jason Tipping (c)
17	Steven Gulley
18	Cherbel Khouchaba
19	Alistair Yates



Petone AFC



No.	Player
GK	Simon Rippon
2	James Nash
3	Joe Sambrooke
5	Jamie Gibbon
6	Justin Waayer
7	Sam Morrisey
8	Jason Cudby
9	Daniel Frischknect
10	Simon Conway
11	Matt Corderoy
12	Sean Clarke
14	Tavonga Mahowa
15	Ethan Attewell
16	Simon Hall
17	Anu Singh
18	Jonny Coulter
19	Morgan Blair

Coach:
Chris Sambrooke

Managers:
Rob Houghton
Kristy Whalen



Referee:
Peter Linney



Assistants:
Richard Sedgwick
Karyn Meade

Rafa's stats

Here's stats on Jason Tipping's 50th and Steve Gulley's 100th matches, plus a comparison of how we've been travelling over the last few years.



Jason Tipping—50 1st team matches

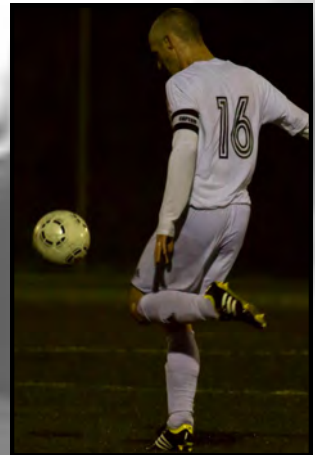
	League	Cup	Play Offs	Total
2010	2	0	0	2
2011	11	1	0	12
2012	16	4	0	20
2013	14	2	0	16
	43	7	0	50



Appearances	TOTAL	HOME	AWAY
Capital Premier	43	21	22
Chatham Cup	7	2	5
	50	23	27

Results	TOTAL	WIN	DRAW	LOSS
Capital Premier	43	25	7	11
Chatham Cup	7	4	0	3
	50	29	0	14

Goal Difference	GF	GA	GD	Cmltve Total
2010	2	4	-2	-2
2011	27	12	15	13
2012	43	33	10	23
2013	59	20	39	62
	131	69	62	



Steven Gulley 100 1st team matches

Head Coach	0
Simon Harrold	28
B Balicevac	43
Scott Easthope	29
	100

Games as Cptn 59

	Played	Won	Draw	Loss
Home	30	20	5	5
Away	29	13	2	14
	Played	Won	Draw	Loss
League	52	29	7	16
Cup	7	4	0	3
	59	33	7	19

Player /Coach	Played	Won	Draw	Loss
Home	15	13	0	2
Away	14	5	4	5
	Played	Won	Draw	Loss
League	24	13	4	7
Cup	5	5	0	0
	29	18	4	7

Player Stats	Games	Starts	Sub	Goals	Assists	Yellow	Red
2008	13	13	0	1	1	6	1
2009	18	18	0	6	7	5	1
2010	19	19	0	15	10	9	0
2011	21	20	1	19	5	5	0
2012	18	16	2	12	5	6	0
2013	11	11	0	4	9	0	0
	100	97	3	57	37	31	2

	Played	Won	Draw	Loss
Central Lge	11	2	1	8
Central Lge P/O	2	0	0	2
Capital Premier	74	41	11	22
Chatham Cup	13	10	0	3
	100	53	12	35

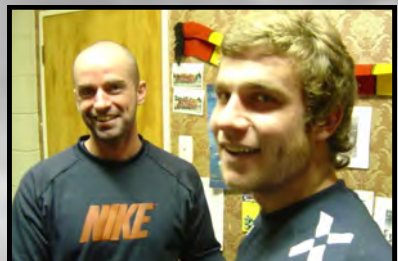
	Played	Won	Draw	Loss
Home	49	34	5	10
Away	51	19	7	25
	100	53	12	35



Steve's commemorative shirt



Great mate Fizz presents the shirt



With coach Simon Harrold signing for Stop Out in 2010

Progress Report

Here are the stats over the last 5 years at the 14 game mark. Some pleasant reading!

	P	W	D	L	GF	GA	GD	Pts	Max Pts	%
2009	14	8	2	4	27	19	8	26	42	61.90%
2010	14	9	1	4	40	23	17	28	42	66.67%
2011	14	8	2	4	35	15	20	26	42	61.90%
2012	14	5	3	6	24	24	0	18	42	42.86%
2013	14	11	2	1	55	14	41	35	42	83.33%
	70	41	10	19	181	95	86	133	210	63.33%

Here are the stats over the last 5 years on our home record at Hutt Park. Even better reading!

	Pl	W	D	L	GF	GA	GD	Points	Max Pts	%
2009	9	5	2	2	21	9	12	17	27	62.96%
2010	9	6	2	1	30	12	18	20	27	74.07%
2011	9	6	1	2	21	9	12	19	27	70.37%
2012	9	7	0	2	27	12	15	21	27	77.78%
2013	7	7	0	0	32	5	27	21	21	100.00%
Total	43	31	5	7	131	47	84	98	129	75.97%

Steve's match reports

Match report vs Wainui. 2-0 win. (Maluvik 2)

Wainui have been our bogey team in recent years, and we welcomed them to Hutt Park after losing to them in the first round, our only loss in the league this year. This was all the motivation we needed to turn up mentally and do the business.

A huge downpour just prior to kickoff had me feeling nervous, as a boggy pitch can be a great leveler, and something we have struggled to deal with in the past.

The game kicked off and it was clear that the boys were up for getting the 3 points, winning everything and completely dominating the game. We spent the first 15 minutes camped in the Wainui half, though we were struggling to create clear cut chances, with puddles everywhere affecting our passing game. Micky was holding the ball up well and was providing the physical presence we need up top against a team like Wainui. After 20 minutes Micky got on the ball just inside the box, managing to turn his centre back and slide a finish under the keeper to put us 1-0 up, a crucial goal considering the conditions and opposition. From here Wainui started to come into the game more and were causing us some problems on the break, with the ball going behind our centre backs the pitch was making it tough to clear the danger. We managed to hold out and go into halftime 1-0 up.

At halftime the message was simple. As long as we don't concede, the points are ours. We will take a 1-0 win any day of the week. The second half followed a similar patten to the first, we were controlling possession, though struggling with the pitch. Eddie was coming into the game more and causing some problems down the right hand side. From one of Eds crosses, Wainui cleared the ball to Steve who played it back over the defense where Micky had been left free. Micky calmly slotted the ball home to make it 2-0. This effectively killed the game off, with a third goal seemingly inevitable. Three times Ed got down the line to square the ball for a tap in for our strikers, only for the ball to stop in a puddle! We were unable to get a third, but a 2-0 win very satisfying considering the conditions. **MOM - Micky**



Match report vs Marist 5-2 win. (Gaughan 4, Gulley 1)

We welcomed Marist to Hutt Park on the back of a great run of form. Marist are a side that have caused us problems in the past, though we had a good 3-0 win against them in the first round. We got the boys motivated for this game, knowing that every game has a lot riding on it. This showed as we started the game well, dominating possession and creating chances. Our wide players were getting in behind and getting dangerous balls into the box, and before long we were 2-0 up. Firstly Regan, who was playing in the holding midfield role, got into some space and slotted Joe through one on one with the keeper, Gaughey took his first touch round the keeper and slotted the ball home brilliantly from a tight angle. Our next was one of our best goals of the season. After a sustained period of possession, the ball was played to Packer who had found some space out wide. Packer held the ball up then slotted in an overlapping Fizz who played over a pin point cross to Gaughey at the back post to bury a volley, a great team goal. At 2-0 up we didn't react the way we should have.

We gave the ball away in midfield cheaply, Marist picked it up and slid a through ball to their striker who finished well to come back to 2-1. This was the scare we needed, and within 10 minutes it was 4-1. Firstly Reggie played another through ball that was slightly off target, but a mistake from the Marist centre back allowed Steve to run through and slot home. Then almost straight from kickoff, Packer played a great ball over the top for Gaughey who chipped the keeper with his first touch for a class finish. 4-1 up at halftime.

At halftime we were pleased that we were 3 goals up, but disappointed to have conceded a soft goal straight after scoring ourselves. The message was to keep things tight at the back, not conceding again was our main goal. Within minutes of the second half starting, it was 4-2, though to be fair it was a strange penalty decision that gifted Marist the goal. After a goal mouth scramble, Rob dispossessed the Marist striker with a good tackle, but some theatrics convinced the ref that it was a penalty! Next the event that changed the game. Marist had brought on a player who was determined to niggle and get under our skin. This player made a terrible tackle of Fizz, and after some retaliation both players were red carded, both sides going down to 10 men. From here the game fizzled out, with Marist content to sit behind the ball and let us play keep ball with a 2 goal lead. Gaughey got his fourth after some passing on the edge of the box found him some space to smash home from 18 yards. 5-2 was the way the score stayed, not our best performance, but happy with the 3 points regardless.

Match report vs Wellington Utd 8-1 win. (Gaughan 3, Gulley 2, Packer 2, Burnett)

Today was a true test of the depth we have as a first team squad, with numbers being stretched the most they have been all season. First team regulars, Steve Toms, Rob, Jake, Fizz and Mickey were all unavailable this week. Luckily the depth we have as a club, allowed us to bring in quality replacements. Regan into centre back, Silao into left back, Blair into midfield, with Finn, James Houpt, James Marsh and Ali Yates giving us quality cover from the bench. Add to that the fact that we lost at Newtown park last year, and that Wellington Utd are fighting for survival, there was no room for complacency.

The game got off to an even start with both sides finding their feet, and for the first 10 minutes we worked at trying to get on top. The next 20 minutes were a different story, everything we touched went in the back of the net. Ed began to destroy his fullback, and from one of his crosses Packer met the ball with a perfect volley to put us 1-0 up. Almost immediately Ed was played in down the right, and with everyone expecting a cross Ed spanked a volleyed in off the far post, brilliant. 2-0. Within minutes Gaughey was wrestled to the ground in the box to win a penalty, Steve slotted home, 3-0. We were on fire and from kick off we won the ball straight away and played it out wide to the left, a cross to the back post found Gaughey who somehow directed a header back across the keeper and into the

net. 4-0. Next a mistake from the Wellington Utd gifted the ball to Steve who played Gaughey in behind to absolutely smash home another goal. 5-0. Another run down the right and perfect cross from Ed found Joe, whose header looped to the back post where Steve was waiting to head home. 6-0. (cont. over page)



PSL Plumbing Services (2007) Ltd
Telephone
04 566 3071

- * Plumbing * Draining * Home Sprinklers
- * Gasfitting * Central Heating * Solar Heating

Wellington United match report cont...

6-0 up at halftime, it can be hard to know what to say. But again it was keeping their score at nil that was our main objective. Wellington Utd came out in the second half in damage control, content with keeping everyone behind the ball making it tough for us to create chances. We played keep ball just inside their half, creating chances without managing to put any away. From a rare Wellington Utd counter attack a mis timed back pass allowed their striker to run through and finish to make the score 6-1.

From here we continued to dominate, and cross from Regan found its way to the back of the net, taking a slight touch off Gaughey to claim his fourth for the day. Our last goal was probably the goal of the day. Packer picked the ball up 25 yards out a smashed home a ripper to make the score 8-1. This was the way the score stayed, a fantastic performance for us, and another inch closer to reaching our goals for the season.

MOM Eddie Burnett

The famous Stop Out quiz is on!

STOP OUT Quiz & Auction Night !



Stop Out Quiz and Auction Night
The Stop Out Club Rooms
On Friday the 9th August 7pm (Happy hour 6pm)
Prices to win, and a great night's entertainment
Only \$15 a person, and a delicious supper
Op to 8 Members in a team
To register, contact Bernie Kane 021 755 183 or
bernie@americandiangeneral.co.nz by 4th August



**Get a team together and have a fantastic night of fun,
laughter and frivolity!**

Friday August 9th at the club rooms!

The Last Word!

The Artificial Pitch

Yesterday we walked over to Memorial Park in Petone to watch late afternoon football. This chance was only down to the new site that is the artificial pitch that is installed there. We caught the last ten minutes of the Women's 2 match between Wainuiomata (0) and Paekakariki (2). Then we watched a little of the Women's 3 between Stop Out (1) and BNU Pretenders (2). Yes, Pretenders, I kid you not. (Who makes these names up?). First match at 3.00pm and the second at 5pm.

Now, artificial pitches are not new but the technology gets better and better. The last one I played on, nearly twenty years ago, was made of some sort of 'industrial grade plastic' with a sprinkling of sand on it. I think it was safe to say that twenty one of us, plus the referee, weren't the least bit keen to go over on the surface. Twenty one plus the referee still leaves one. The one, was one of the team I played for. We had a tenacious midfielder who would go after anything. He still, has the scar on his thigh from that night. He chased back an attacking player, made a great tackle and then spent fifteen minutes on the side-line nursing the graze of all grazes. That sort of incident on the modern surface has all but disappeared. There is still the odd graze but not at those spectacular levels.

The new pitches have a great surface and consistent bounce. They look good and to me they feel good underfoot. There are, in my opinion, two negatives. One is the surfaces need to be looked after with some vigour by the owners and the players that use them. They can, I am told get dirty and need something approaching regular disinfecting. So if you are using them leave out things like spitting. This makes it healthier for everyone using them. My hope is that good regime is in place.

Secondly, there is a something of a social worry. Games that get played late in the evenings don't lend themselves to a return to the club rooms for a wind down and chat. In the first game I mentioned above neither clubrooms of the respective teams is handy. Sure, in this case, the Petone clubrooms are about but I am not clear if they have the volunteers about to open them for every game that is played at the park. So, some of the post-match sociability is lost. It was also interesting that whilst game time is important (I wouldn't pretend otherwise) none of the four clubs I saw would call Memorial Park their home ground.

The new pitches are a real boon. After all there is probably nothing worse than getting geared up for match day and CANCELLATION looms. The club and clubrooms structure is one well worth protecting and I live in the hope that we can preserve it. It took a long time to build up and is worth keeping.

Life-long Stop Out fan Mike Barton gives us his personal view on the beautiful game!



 **Infinity**
Foundation Limited



